

# Differential Pressure Transmitter

## Series 616KX

The Series 616KX Differential Pressure Transmitters offer maximum flexibility in a compact design, ideal for installers and maintenance professionals. Our smallest differential pressure transmitter features a One-Touch® Digital Push-Button Calibration Technology for easy access in any mounting configuration and field-selectable output signals. Its molded housing supports multiple imperial and metric process connections, with optional 1/8" NPT or BSPT threaded models for simplified installation.



### Key Benefits & Features

#### Versatile Performance and Range

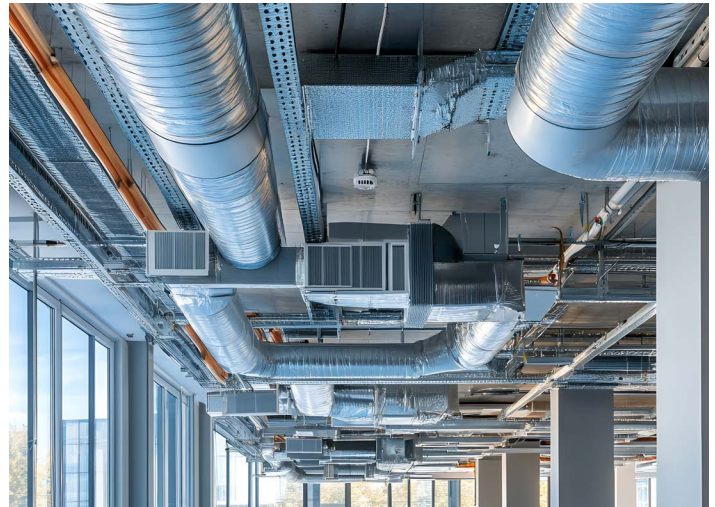
- Largest pressure range from 0.1 inches of water column to 40 inches (10,000 Pa) to meet any application requirement.
- Field selectable output signal in milliamps or volts for simplified ordering.
- Barbed process connections in inches and millimeters to accommodate a wide range of applications.

#### Ease of Use and Convenience

- Large One-Touch® Zero button calibration for ease of use.
- Removable screw-type terminal block for easy wiring in tight spaces.

#### Flexible Mounting and Installation Options

- DIN mountable or wall-mounted with a 4-hole mounting configuration for maximum flexibility.



### Key Specifications

**Service:** Air and non-combustible, compatible gases

**Wetted Materials:** Consult factory

**Accuracy:** 616KX-025 ± 0.25 % FSO 616KX-050 ± 0.50 % FSO  
616KX-100 ± 1.0 % FSO 616KX-200 ± 2.0 % FSO

**Stability:** < ± 1 % / year FSO

**Temperature Limits:** -4 °F to 159 °F (-20 °C to 70 °C)

**Pressure Limits:** 3.6 psig for ranges 0 in w.c. to 1 in w.c.  
(25 Pa to 250 Pa; 2.5 mm w.c. to 25 mm w.c.)  
6 psig for ranges 0 in w.c. to 40 in w.c.  
(500 Pa to 10000 Pa; 50 mm w.c. to 1000 mm w.c.)

**Thermal Effect:** 0.02 % FS / °F (0.036 % FS / °C)

**Power Requirements:** 10 Vdc to 36 Vdc (2-wire), 17 Vdc to 36 Vdc or isolated 21.6 Vac to 33 Vac (3-wire)

**Output Signal:** 4 mA to 20 mA or option with field selectable 0 V to 10 V, 0 V to 5 V, 2 V to 10 V, 1 V to 5 V

**Zero Adjustment:** Push button

**Loop Resistance:** 0 Ohms to 1250 Ohms

**Current Consumption:** 21 mA max

**Electrical Connections:** Screw-type terminal block

**Process Connections:** Barbed, male ports for 1/8 in, 3/16 in, 1/4 in, 5 mm, 6 mm ID flexible tubing

**Weight:** 1.8 oz (51 g)

**Compliance:** CE, RoHS 3, Plenum Rated (UL 2043), UL94 V-0

**Enclosure Rating:** NEMA 1 (IP20)

**Mounting Orientation:** Not sensitive to position. 35 mm DIN rail side and back. Mounting holes for wall mount with #6 screws

## Common Applications

- Air Handlers
- Duct Pressure Monitoring
- Variable Air Volume
- Filter Monitoring

## How to Order

